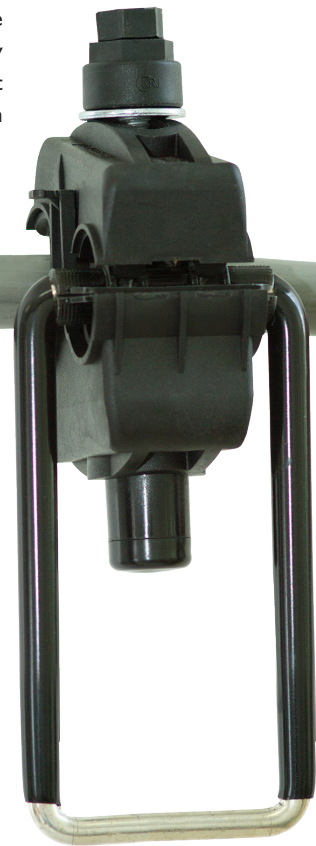
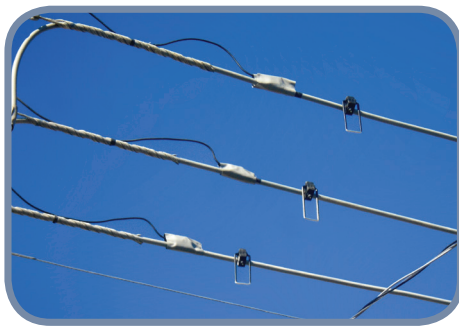


KARP | INSULATION PIERCING CONNECTOR FOR SPACER CABLE IN MEDIUM VOLTAGE

KARP piercing connectors family have been developed to find a need for tap connections in 15, 25 and 35kV Spacer Cables without stripping and removing insulation from the conductors and eliminating the need for weather-proofing and re-insulating, can be installed in hot line and in any position. **KARP** connector is composed of polymer components with resistance to ultraviolet rays and busbar in copper (piercing type), supported on helicoidal springs. This innovative concept of supporting spring busbar is the greater differential its design, because the springs act in busbar keeping a permanent contact pressure on the conductors, compensating for any possible diameter variations that may happen in low quality conductors. **KARP** connector has its technical characteristics be watertight and have tightening limit control through the polymer fuse head. It has the option of the stirrup for ground safety or for connection to the transformer, which can be supplied separately or as a kit, connector + stirrup.

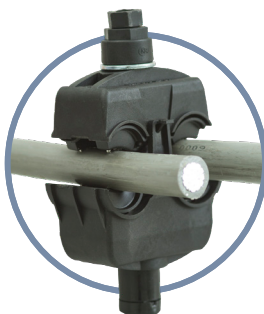
Additional information can be obtained from our Technical Product Specification ETE-055.

TYPE	RANGING mm ²	RANGING mm ²	VOLTAGE kV	INSULATION COVER	TORQUE	NUMBER OF SCREWS
1	35 – 95	35 – 95	15/25	3 / 4 mm	42-46 Nm	1
2	50 – 185	50 – 185	15/25	3 / 4 mm		
3	120 – 300	120 – 300	15/25	3 / 4 mm		
4	240 – 300	70 – 95/120	15/25	3 / 4 mm		
5	70 – 185	70 – 185	35	7,6 mm		2
6	120 – 300	120 – 300	35	7,6 mm		



OPTIONAL:
Stirrup to safety ground, available in version 8.20 mm diameter.

Insulation
Piercing +
Spring Effect



ANEEL
AGÊNCIA NACIONAL DE ENERGIA ELÉTRICA
P&D - Programa de Pesquisa e Desenvolvimento

enel unesp

KARP | ACCESSORIES

Developed by KRJ, the remote application device of the **KARP** connector has been designed to allow the application of the connector + stirrup assembly, with hot stick cutting down lineman exposure to energized lines, offering better safety, agility and speed in the execution of the service. With the remote device the connection of connector + stirrup can be done from the ground or bucket and the installation of the grounding point with **KARP** or connection with transformer in the spacer cable becomes faster and safer. Using this unique remote application tool, the adapted for use with standard hot stick, the service become to the fastest safer hot-stick method available.

