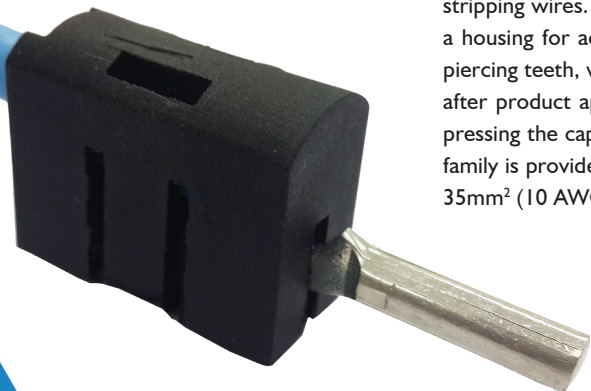


KMED | CONNECTOR FOR INPUT POWER METER

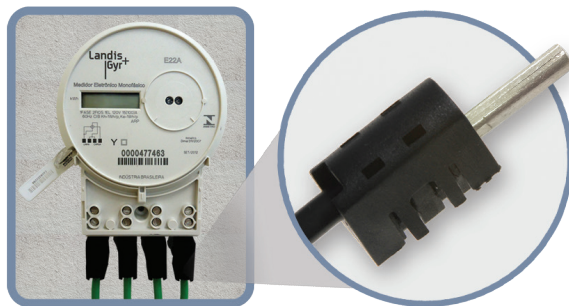
The connectors **KMED** family are designed for connections on the power meter without the need for stripping wires. They consist of two polymeric components denominated cap and base. The base has a housing for accommodating a compensating spring and a tinned busbar copper electrolytic with two piercing teeth, which is supported on the first, thus ensuring the permanent strength of electrical contact after product application. Easy to install, can be applied with a universal pliers or a similar tool, which presses the cap with the base and performs the application of locking protrusions external. The **KMED** family is provided in five models for conductors connections in classes 2,4,5 and 6 ranging from 6mm² to 35mm² (10 AWG to 2 AWG).



TYPE	CABLE
KMED-1	6 mm ²
KMED-2	10 mm ²
KMED-3	16 mm ²
KMED-4	25 mm ²
KMED-5	35 mm ²



KMED VIDEO



Additional information may be obtained from our Technical Product Specification.