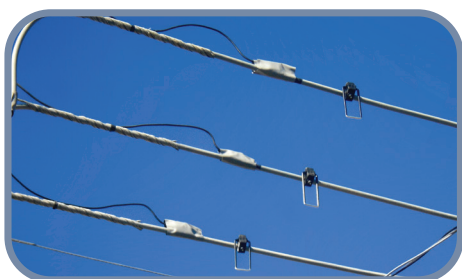


The **KARP** Insulation Piercing Connectors had been developed to attend a need for connections in Spacer Cables (15kV, 25kV and 35kV) without stripping or removing conductors insulation and eliminating the need for weather-proofing and re-insulating. It can be installed in hot line and any position. The KARP connector is produced in polymer components, UV resistance and busbar in copper supported by helicoidal springs. This innovative concept of supporting spring busbar is the greater differential, keeping a permanent contact pressure on the conductors, compensating for any possible diameter variations that may happen in conductors.

The **KARP** connector offers tightness characteristic and have a torque limiter through the polymeric fuse head. Allows to use a copper stirrup for temporary grounding or for connection to the transformer, which can be installed separately or as a kit, connector + stirrup.

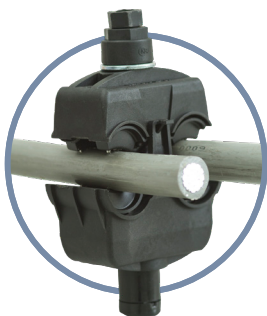
Additional information can be obtained from our Technical Product Specification ETE-055.

TYPE	VOLTAGE (kV)	mm <sup>2</sup>		AWG/MCM		APPLICATION TORQUE (Nm)	BOLT
		MAIN RANGE	TAP RANGE	MAIN RANGE	TAP RANGE		
1	15 / 25	35 - 95	35 - 95	2 - 3/0	2 - 3/0	32-36	1
2	15 / 25	50 - 185	50 - 185	1/0 - 336.4	1/0 - 336.4	42-46	
3	15 / 25	120 - 300	120 - 300	4/0 - 556.5	4/0 - 556.5		
4	15 / 25	200 - 300	50 - 120	397.5 - 556.5	1/0 - 4/0	42-46	2
5	35	70 - 185	70 - 185	2/0 - 336.4	2/0 - 336.4		
6	35	120 - 300	120 - 300	4/0 - 556.5	4/0 - 556.5		



**OPTIONAL:**  
Stirrup to safety ground, available in version 8.20 mm diameter.

Insulation Piercing + Spring Effect



## KARP | FITTINGS

### Distance Application Device for KARP + Stirrup

Developed by KRJ, the remote application device for the **KARP** connector has been designed to allow the application of the connector + stirrup assembly, with hot stick cutting down lineman exposure to energized lines, offering better safety, agility and speed in the execution of the service. With the remote device the connection of connector+ stirrup can be done from the ground or bucket and the installation of the grounding point with **KARP** or connection with transformer in the spacer cable becomes faster and safer. Using this unique remote application tool, the adapted for use with standard hot stick, the service become to the fastest safer hot-stick method available.

